



THROUGH THICK AND THIN

Check what you think is true.

A true friend...

- is loyal.
- tells you the truth even if it hurts you.
- may lie to avoid hurting you.
- is always there for you.
- spends a lot of time with you.
- never forgets your birthday.
- is hard to find.
- accepts you the way you are.
- always forgives you.

perdoar

- Are you a good friend? What could you do to become a better friend?
- Do you make friends easily? How can we make new friends?
- How long have you and your best friend been friends?
- Why do friends sometimes drift apart?

Listen to Matt and Sarah and mark the alternative that shows what the conversation is about.

- a) Sarah asked Matt to help her find the right college.
- b) Matt is trying to convince Sarah to go to college.
- c) Sarah needs Matt's help to pay for college.

What do you think Sarah will do?

- She will follow Matt's advice.
- She will try to find a job.
- She will stop studying.



Listen to Matt and check your answer.

Do you think Matt is a good friend? Would you do the same?

Complete the questions and then take turns asking and answering them.

man men
woman women

Tell me about it = nem me fale!

- a) Do women have a larger circle of friends than men?
- b) Which is more difficult, to make new friends or remain friends? Why?
- c) What is the main difference between friends and social acquaintances?
- d) Do you get along well with all your friends?

Check what you wouldn't do.

- lend money to a friend
- borrow money from a friend
- go out with a friend's ex
- gossip about a friend
- cancel plans with a friend because you found something more interesting to do



Expressions to use in the answers:

- Of course I would.
- I might consider it.
- Probably not.
- Not even if you paid me.

Match the opposites.

- a) friend (c) look down on
- b) punish (d) harm
- c) admire (b) forgive
- d) help (A) enemy

Exchange ideas about the questions below.

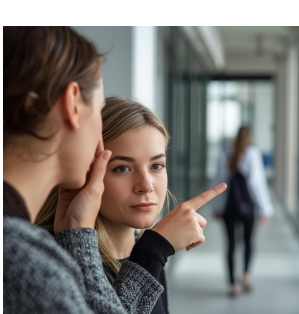
- Do you have any enemies? What did they do to harm you?
- People make enemies when they look down on others. Do you agree with that?
- We usually admire friends. Is it possible to admire an enemy? How?
- Have you ever punished a friend for doing something wrong?
- Is there anything you wouldn't forgive a friend for doing?

HOW TO USE SUPPOSED TO

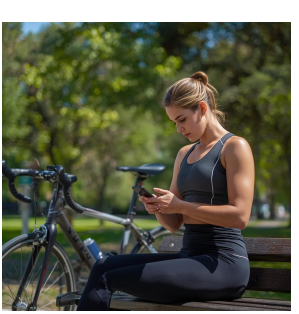
We use **supposed to** to talk about things that you should do or people expect you to do.



- A: What **are** doctors **supposed to** do?
- B: They **are supposed to** treat the patients with compassion



- A: What isn't a good friend supposed to do?
- B: A good friend isn't supposed to gossip about you.



- A: At what time was Jack supposed to meet Tracy?
- B: He was supposed to meet her at 4, but as usual he is late

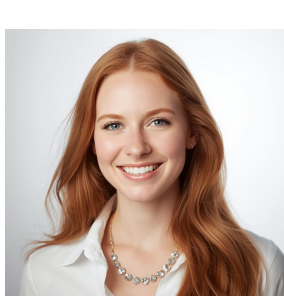
What are they supposed to do? Complete the sentences according to your opinion.

- A good friend is supposed to always be there for you
- A good teacher is supposed to involve the students on the class
- Students are not supposed to get distracted on the class
- Parents are supposed to empathic of your child
- Politicians are not supposed to decive the people

decieve

Listen to Jack talk about his friends and match what each person is or was supposed to do. Write the first letter of their names.

Grace



Steve



Karen



(S) wasn't supposed to

(K) go to the gym

(G) at 9 a.m.

(K) is supposed to

(G) have a business meeting

(S) at 7 p.m.

(G) was supposed to

(S) see the dentist

(K) more often